

WHY JOIN?

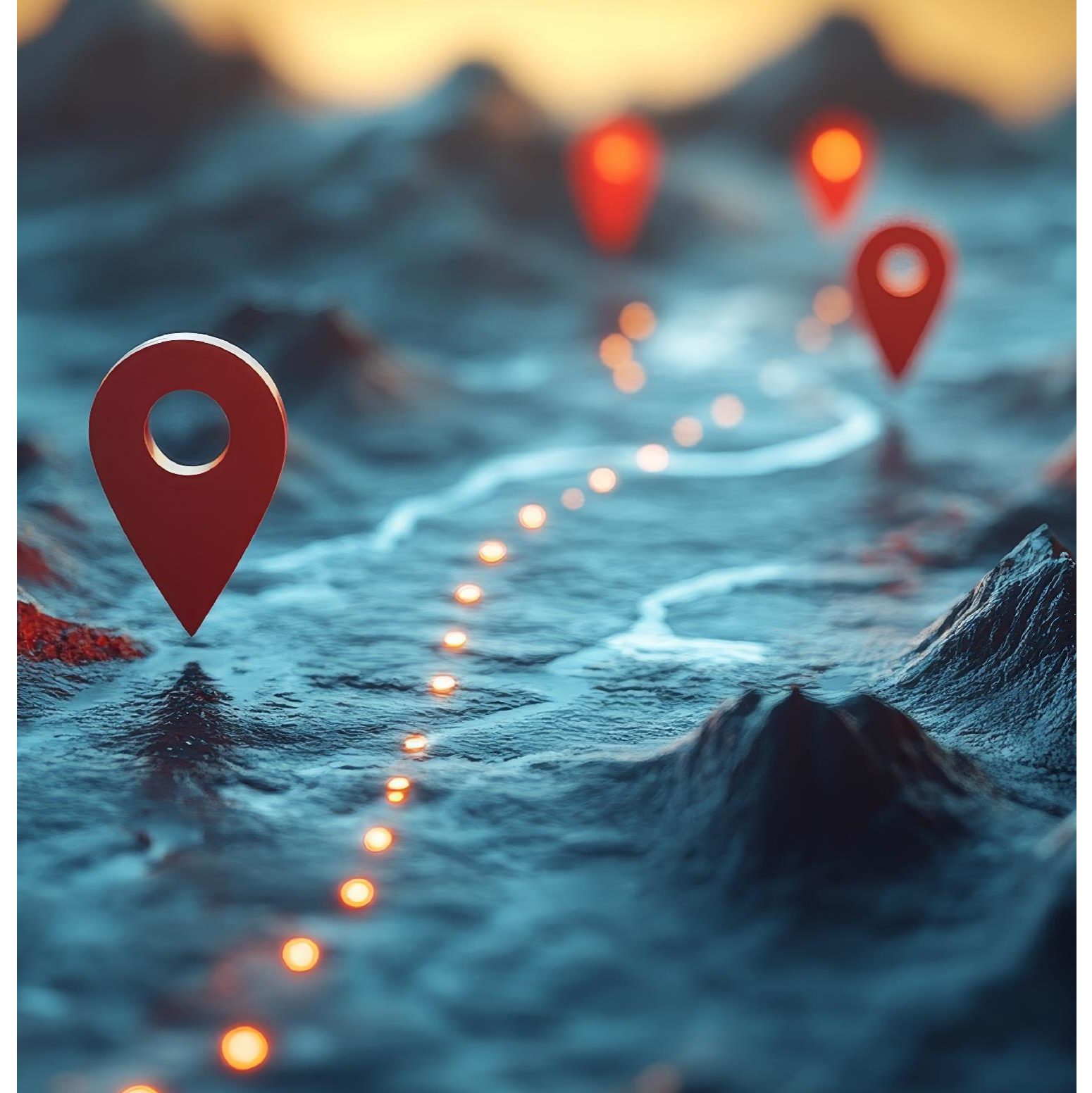
magma

YOUR MAGMA JOURNEY

Magma meets as a group 8 times a year, hosted by a different member. The group works in partnership with Elizabeth Adlington an experienced facilitator who develops and delivers the annual programme tailoring each agenda to the current ideas and interests of the group.

Three times a year the group is joined by team members to develop the learning from expert thinkers and find practical ways to implement new ideas and practices into their businesses.

magma



In July Magma holds a Summer Residential to be inspired, hear new ideas and have time and space to develop thoughts and understanding. Once again, they are joined by members of their team to share in reflection and development of new thinking for their business.

Transformational Thinking Dates 2025 -26

Trimester 1

- 5th September 2025
- 17th October 2025
- 28th November 2025 – Members and Colleagues

Trimester 2

- 9th January 2026
- 6th February 2026
- 20th March 2026 – Members and Colleagues

Trimester 3

- 8th May 2026
- 12th June 2026
- 13th and 14th July 2026 – Summer Residential
(14th July – Members and Colleagues)



Turn the tide in your business

Contact Details

Elizabeth Adlington - elizabeth@adlingtonyoung.com Mob: 07974 740882

magma